

# MARCH MONEY-SAVING MADNESS



Thru Size 42 **\$17<sup>88</sup>**  
 Size 46 **\$19<sup>88</sup>**  
**Denim Dungaree**  
 • Relaxed Fit  
 • 12-oz. 100% Cotton  
 • Enzyme Washed  
 #452.45



Plain Toe **\$89<sup>99</sup>**  
 Safety Toe **\$94<sup>99</sup>**  
**Alaska FX 6" Lace Boots**  
 • F-X Techni Flex  
 • Tumbled Grain Leather  
 • Goodyear Welt  
 #70962 Tan, 89370

**Premium Waters, Inc.**  
 bottled water solutions



**\$3<sup>49</sup>**  
**Bottled Water**  
 • .5-Liter  
 • 24-Pack  
 #01000



**Havoline** **\$2<sup>44</sup>**  
 Less Rebate — **66¢**  
**Net Cost \$1<sup>78</sup>**  
**Motor Oil**  
 • 5W20, 5W30,  
 10W30, 10W40, 30W  
 Quart

\* Rebate on Case Quantities Only



[www.campbellsupply.net](http://www.campbellsupply.net)

**SALE PRICES GOOD MARCH 3 THRU MARCH 14, 2010**

Power Tools • Electrical • Plumbing • Automotive • Tires • Clothing • Paint • Hardware  
 Lawn & Garden • Farm & Ranch • Lumber • Pet Supplies • Toys • Outdoor Living • Trailers



**“Second Shift”  
6” Lace Boots**

Plain Toe **\$62<sup>99</sup>**

Safety Toe **\$66<sup>99</sup>**

#P72593, P89586



M-XL Reg. **\$19<sup>99</sup>**

Talls **\$21<sup>99</sup>**

**Long Sleeve Premium  
Brushed-Washed Canvas &  
Denim Shirts**

#542



**\$74<sup>99</sup>**

**“Blackbriar Mid”  
Soft Toe Boot**

- Tumbled Oiled Full Grain Leather
- T16 Rubber Outsole

#P73592



**\$16<sup>99</sup> - \$19<sup>99</sup>**

**Long Sleeve  
Chambray Shirts**

- Button or Snap
- 4.5-oz. 100% Cotton



**\$79<sup>99</sup>**

**“Lander Mid” Steel Toe**

- Tumbled Oiled Full Grain Leather
- T16 Rubber Outsole

#P89840



**\$5<sup>00</sup> Off**

**Men’s  
Blue Denim or  
Hickory Stripe  
Bibs**

**15% Off**

**Rubber Slip-On Overshoes**



**\$5<sup>00</sup> Off**

**Unlined  
Long Sleeve  
Coveralls**

DICKIES!

DICKIES!

3

DICKIES!

DICKIES!

DICKIES!

DICKIES!

DICKIES!

DICKIES!



### Workhorse Jeans

- Double Knee
- Cell Phone Pocket

Thru Size 44 **\$21<sup>99</sup>**

Size 46-50 **\$22<sup>99</sup>**

#15-293SNB



M-XXL **\$10<sup>00</sup>**

3-6XL **\$12<sup>00</sup>**

### 2-Pack Pocket T-Shirts

\* Clearance! \*

DICKIES!

DICKIES!

DICKIES!

DICKIES!



### Prewashed 5-Pocket Jeans

- 14-oz. 100% Cotton
- Fits over Boots

Thru Size 44 **\$12<sup>99</sup>**

Size 46-50 **\$14<sup>99</sup>**

Size 52-56 **\$15<sup>99</sup>**

#9393RNB



M-XXL Reg. **\$23<sup>99</sup>**

L-3XL Tall **\$24<sup>99</sup>**

### Thermal Lined Hooded Sweatshirts

- Black, Navy, Grey, Brown

#TW6303

DICKIES!

DICKIES!

DICKIES!

DICKIES!



### Utility Jeans

- Triple Stitched Seams
- 14-oz. 100% Cotton

Thru Size 44 **\$19<sup>99</sup>**

Size 46-50 **\$21<sup>99</sup>**

#1993SNB

- Full Grain Leather
- Welt Construction
  - Lightweight
  - Cushion Insole
- Oil Resistant Rubber Outsole

### 6" Work Boots



**\$49<sup>99</sup>**

### "Raider" Soft Toe

#WD7215



**\$69<sup>99</sup>**

### 10" Safety Toe Wellington

- Full Grain Leather
- Cushion Insole

#WD4355



**\$54<sup>99</sup>**

### "Brawny" Steel Toe

#WD7915

DICKIES!

DICKIES!

DICKIES!

DICKIES!

DICKIES!

DICKIES!



Cub Cadet

**\$1,999<sup>00</sup>**

**22HP Lawn Tractor**

- Kawasaki Twin Engine
- Hydrostatic Foot Control
- Cast Iron Front End
- 50" Cut

#LTX2060KW



Poulan  
PRO

**\$1,199<sup>00</sup>**

**19.5HP 42" Lawn Tractor**

- Cast Iron Front End
- Hydrostatic Transmission

#PB195H42LT



DRESSEN CUSTOM TRAILER, INC.  
DCT

**\$1,250<sup>00</sup>**

**6' x 10' Utility Trailer  
with 16" Sides**

- 3500-lb. Axles
- Ramp Tail Gate

#610SE



STEALTH  
TRAILERS

**\$3,100<sup>00</sup>**

**Pro-Line  
Enclosed 6' x 12' Trailer**

- Torsion Axles
- Ramp Door
- Roof Vent
- Interior Light

#SRPL612SA

# 20% Off

## Mouse & Rat Baits



Sprayway®

# \$1.99

## Glass Cleaner

#50



MISTER  
PLUMBER  
CONCENTRATED POWER  
DRAIN CLEANER

# \$5.88

## Drain Cleaner

- Concentrated Power

32-oz.



# GOO GONE.

# \$2.99

## Goo Gone®

- Removes Stickers, Grease, Gum, Tar, Crayon, Tape

#GG12, 8-oz.



**POLAR**  
TRAILER

# \$299.00

## ATV Trailer

- 15 cu. ft. 1200-lb. capacity
- Greaseable off-road wheel bearings
- Poly bed dumps & swivels

#HD1200



**shop·vac**  
THE ORIGINAL WET DRY VAC®

# \$38.99

## 5-Gallon 2HP Wet/Dry Vac

#5840500



**KEEPER**

# \$16.99

## Ratchet Tie-Downs

- 4-Pack
- 1" x 15'
- 1500-lbs. rated capacity

#05506



**KEEPER**

# \$7.49

## 12-Pack Elastic Bungee Cords

#06313



**MSC**

**\$12<sup>88</sup>**

**Puppy Milk Replacer**

• 28-oz. Pouch  
#21145



Small **\$24<sup>99</sup>**

Medium **\$32<sup>99</sup>**

Large **\$39<sup>99</sup>**

**Furminator  
De-Shedding Tool**

#00101, 00112, 00113



**\$11<sup>99</sup>**

**21% Protein Dog Food**

• 40-lb. bag



**\$9<sup>99</sup>**

**31% Protein  
Blended Cat Food**

• 20-lb. bag



Small Dog **\$89<sup>99</sup>**

Large Dog **\$99<sup>99</sup>**

**Sport Dog Yard Trainer**

#SD-105, SD-105S



**99¢**

**Pet Bandage**

• 2" Width  
• Assorted Colors

#2200PP-036



**\$3<sup>67</sup>**

**Ivermectin Paste  
Horse Wormer**

• 21-oz. Dose Syringe

#354925-04806

Try Science Diet  
**DOG FOOD**  
35-lb. bag or larger or  
**CAT FOOD**  
17.5-lb. bag or large) and

**Save \$7<sup>00</sup>**  
**with Mail-In Rebate!**





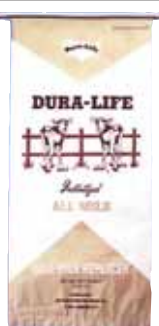
**Nutrena**

**\$10<sup>99</sup>**

**Safe Choice Horse Feed**

- 50-lb. Bag

#1316



**MSC**

**\$27<sup>99</sup>**

**Calf Milk Replacer**

- All Milk
- 25-lb. Bag

#25843



**Cargill**

**\$49<sup>99</sup>**

**Farm to Farm  
20% Protein  
Cattle Energy Tub**

- 200-lb.

#4790



**\$7<sup>99</sup>**

**ImmuStart® 50 Colostrum**

#CV7061



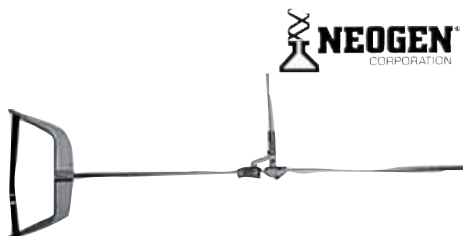
*NatureWise*

**\$9<sup>88</sup>**

**Chick Starter/Grower Feed**

- 50-lb. Bag

#91007



**NEOGEN**  
CORPORATION

**\$169<sup>99</sup>**

**Calf-Eze Calf Puller**

#3022



**\$5<sup>99</sup>**

**37% Protein  
Livestock Blocks**

- 33-1/3 lb.

#325



**Behlen**  
COUNTRY  
*This is Your Land!*

**\$649<sup>99</sup>**

**Hay Smart Bale Feeder**

- Keep bale off the ground

#26120512

**PACER® PUMPS**

**\$197<sup>00</sup>**

**Water Transfer Pump**

- 127cc Engine
- 2" Ports
- #SEB2PL-E4C

**20% Off**

**Cam Fittings  
with S.S. Handles**

- 3/4" to 2"



**NORWESCO**



*Spraying Systems Co.*



**\$3<sup>33</sup>**

**XR Spraying Tips**

- 80° or 100°
- Various Sizes

**NORWESCO**



**\$439<sup>99</sup>**

**Water Storage Tank**

- 1500-Gallon
- #40041

**DELAVAL**



**\$59<sup>99</sup>**

**Hydraulic Cylinder**

- 3" x 8"
- #PML3008-125ASAE

**HYPRO®**



**\$49<sup>99</sup>**

**12-Volt Diaphragm  
Sprayer Pump**

- 1.8 GPM
- #8009-543-236

**Osmundson**



7" **\$3<sup>39</sup>**

8" **\$3<sup>99</sup>**

9" **\$4<sup>29</sup>**

**Field Cultivator Shovels**

- 40° or 47°
- Full 1/4" Thickness

**HYPRO®**



**\$99<sup>99</sup>**

**8-Roller Sprayer Pump**

#7560C



### Hydraulic Hose

- 2-Wire
- 1/2" MPT Fitting

24"	<b>\$5<sup>99</sup></b>	72"	<b>\$12<sup>59</sup></b>
36"	<b>\$7<sup>59</sup></b>	84"	<b>\$14<sup>19</sup></b>
48"	<b>\$9<sup>29</sup></b>	96"	<b>\$15<sup>89</sup></b>
60"	<b>\$10<sup>89</sup></b>	120"	<b>\$19<sup>19</sup></b>



**GOLDENROD**

**\$28<sup>00</sup>**

### Fence Wire Stretcher

#56560



**GPI**

**\$199<sup>99</sup>**

### 12-Volt Fuel Pump

- 15-Gallon Per Minute
- Complete with hose & nozzle

#110000-107



**IOWA**  
STEEL & WIRE CO.

**\$39<sup>99</sup>**

### Premium Barb Wire

- 2-Point
- 12.5 gauge x 1320-ft.

#0101-0



**Apache**  
NOZZLE & MOUNTING, INC.

**\$39<sup>99</sup>**

### Automatic Fuel Nozzle

- 3/4" NPT Inlet

#99000239, 9900246



**IOWA**  
STEEL & WIRE CO.

**\$88<sup>00</sup>**

### Non-Climb Horse Fence

- 2" x 4" Spacing
- 48" tall x 100' roll

#490-0



**Cim-Tek Filtration**  
**PETROLEUM**

3/4" **\$9<sup>49</sup>**

1" **\$9<sup>99</sup>**

### Replacement Fuel Filter

- 10 Micron

#70002, 70004



**RED BRAND**

**\$23<sup>99</sup>**

### Ranch Panels

- 52" tall x 16' long

#91757



**VanSickle**

**\$5<sup>00</sup> Off**

**Super Premium Interior Latex House Paint**

- Satin or Semi-Gloss
- Gallon



**VanSickle**

**\$18<sup>99</sup>**

**Interior Latex Primer**

- 2-Gallon
- #87122



**LDR**

**\$33<sup>99</sup>**

**Single Handle Kitchen Faucet**

- Sprayer
- Chrome
- All Metal

#011 1400



**LAVELLE**  
**korky**

**\$8<sup>99</sup>**

**Toilet Fill Valve Kit**

- Includes Valve & Flapper

#818BP



**NATIONAL**

**Storage Hooks**

6.5" **59<sup>¢</sup>**

6" **99<sup>¢</sup>**

2.75" **99<sup>¢</sup>**

4-Sided **\$1<sup>19</sup>**

#221-184, 221-176, 221-192, 220-855



**CHAMBERLAIN**

**\$129<sup>00</sup>**

**1/2HP Garage Door Opener**

#PD212D



**WAYNE**

1/3HP **\$88<sup>00</sup>**

1/2HP **\$99<sup>00</sup>**

**Cast Iron Sump Pump**

- 3-Year Warranty

#CDU790, CDU800

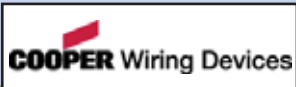


**WAYNE**

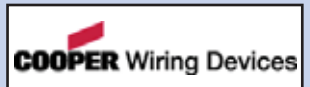
**\$155<sup>00</sup>**

**1/2HP Shallow Well Jet Pump**

#SWS50



**99¢**  
**Porcelain  
 Keyless Lampholder**  
 #604-Box



**35¢**  
**Electric Receptacle**  
 • Ivory, Brown or White  
 #270 Box



**\$5.49**  
**Electrical Tester**  
 #GET-3213



**\$7.29**  
**Single Pole Breaker**  
 • 15, 20, 30 Amp  
 #Q0115, Q0120, Q130



**\$9.99**  
**Florescent Shop Light**  
 #9240



**\$2.88**  
**65-Watt Flood Light Bulb**  
 #65BR30FL



**\$12.99**  
**6' 16/3 ProGlow Work Light**  
 #D12816025



**\$4.99**  
**6' 18/2 Brooder Light**  
 #BJ204

**LENOX**



**\$9<sup>99</sup>**

**Hack Saw Frame**

#20918-4012

**ARROW**



**\$19<sup>99</sup>**

**Staple Gun**

#T50PBN

**STANLEY**



**\$9<sup>99</sup>**

**100-ft. Tape Rule**

#34-106

**JET**



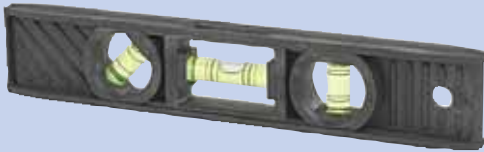
**\$34<sup>99</sup>**

**14-Piece  
Combo Wrench Set**

• SAE or Metric

#477414, 477415

**STANLEY**



**\$1<sup>99</sup>**

**Torpedo Level**

#42-294

**ORIGINAL  
BucketBoss  
BRAND**



**\$7<sup>99</sup>**

**Gatemouth Jr.  
Tool Bag**

#06007



**\$11<sup>99</sup>**

**Gatemouth  
Tool Bag**

#06004

**STANLEY**



**\$9<sup>99</sup>**

**25' Tape Rule Bonus Pack**

#90-082TR

**SKIL**



**\$39<sup>99</sup>**

**12-Volt Cordless Drill**

#2466-02



**DEWALT**  
High Performance Industrial Tools

**\$144<sup>00</sup>**

**14" Chop Saw**

#D28700

**DEWALT**  
High Performance Industrial Tools



**\$88<sup>00</sup>**

**4.5" Grinder/Drill  
Combo Kit**

• 10 Amp Grinder

#D28402D



**Makita**

**CLEARANCE!**  
**\$325<sup>00</sup>**

**4-Pack 18-Volt Combo Kit**

#DK1840DL



**Makita**

**\$175<sup>00</sup>**

**18-Volt Lithium-Ion Drill**

#BDF452HW



**Makita**

**\$199<sup>00</sup>**

**14.4-Volt  
Impact/Drill/Light Kit**

#6935FDWDEX



**Makita**

**\$99<sup>00</sup>**

**Circular Saw**

#5007FK/NK

**Makita**



**\$39<sup>00</sup>**

**4.5" Grinder**

#9557PB

**Makita**



**\$129<sup>00</sup>**

**5" Grinder**

• 12.5 Amp

#9015A



**\$2<sup>44</sup>**

**Choke & Carb Cleaner**  
#7459



**On Sale  
Now!  
Unbeatable  
Price!**



**\$1<sup>99</sup>**

**Brake or  
Power Steering Fluid**  
• 12-oz.  
#00203, 00204



**\$2<sup>29</sup>**

**Oil Treatment**  
• 15-oz.  
#65148

**Buy 1, Get 1 FREE!**

**Engine Degreaser**  
• Foamy or Regular



#EB-1, FEB-1

**Buy 1, Get 1 FREE!**

**Brake Cleaner**



#M7-20



**\$1<sup>99</sup>**

**11-oz. Silicone Spray**  
#M9-14



**\$1<sup>99</sup>**

**Liquid Wrench**  
#L1-12, L3-12



Convert-A-Ball™

**\$22<sup>99</sup>**

**2-Ball Set with 1" Shank**  
#901B



**PLEWS**

**\$9<sup>99</sup>**

**Pistol Grip Grease Gun**  
#30-300



**Pro-Lift**

**\$89<sup>99</sup>**

**2.5-Ton HD Floor Jack**  
#G-2489



**Pro-Lift**

**\$14<sup>99</sup>**

**12-Volt Rechargeable Spot Light**  
#I-5010



**SCOTT**

**\$1<sup>69</sup>**

**Roll of Shop Towels or Rags**  
#75130, 75230



**PETERSON** **PM**  
MANUFACTURING CO.

**\$16<sup>99</sup>**

**Trailer Light Kit**  
#V540

***Mystik***



**\$1<sup>79</sup>**

**JT6 Multi-Purpose Grease Tube**  
14-oz.



***Mystik***

2-Gallon **\$16<sup>99</sup>**

5-Gallon **\$41<sup>99</sup>**

**JT8 Motor Oil**  
• 10W30, 10W40, 15W40, 15W50, 30W

# 25% Off

## Flower & Vegetable Seeds



# Jiffy

# 20% Off

## Garden Seed Starting Items



Sale Price **\$1.50**

Less Coupon — **25¢**

Final Cost **\$1.25**

**White or Yellow Popcorn**  
• 2-lb. Bag



**\$1.79**

**Jumbo Red or Black Twists**  
16-oz.



- Power Tools
- Electrical
- Plumbing
- Automotive
  - Tires
  - Clothing
  - Paint
  - Hardware
- Lawn & Garden
- Farm & Ranch
  - Lumber
- Pet Supplies
  - Toys
- Outdoor Living
  - Trailers

**SALE PRICES GOOD MARCH 3 THRU MARCH 14, 2010**

**Sioux Falls, SD**  
3101 East 10th Street Ph: 336-2494  
HOURS: Mon.- Fri. 8:00 - 7:00  
Sat. 8:00 - 5:00  
Sun. 11:00 - 5:00

**Sioux Falls, SD**  
Campbell's  
**Home & Auto Store**  
49th & Western Ave. Ph: 332-8700  
HOURS: Mon.- Fri. 8:00 - 7:00  
Sat. 8:00 - 5:00 Sun. 11:00 - 5:00

**Sturgis, SD**  
2425 Lazelle Exit 30 I-90  
Ph: 347-6352  
HOURS: Mon.- Fri. 7:30 - 6:30  
Sat. 7:30 - 5:00  
Sun Hours 11:00 - 5:00

**Madison, SD**  
535 3rd St. NE Ph: 256-4545  
HOURS: Mon.- Fri. 8:00 - 6:00  
Sat. 8:00 - 4:00

**Mitchell, SD**  
1400 S. Burr Street Ph: 996-8305  
HOURS: Mon.- Fri. 8:00 - 7:00  
Sat. 8:00 - 5:00 Sun. 11:00 - 5:00

**Vermillion, SD**  
1108 West Cherry Ph: 624-9112  
HOURS: Mon.- Fri. 8:00 - 6:00  
Sat. 8:00 - 4:00

**Rock Rapids, IA**  
1104 1st Ave Ph: (712) 472-2559  
HOURS: Mon.- Fri. 8:00 - 5:30  
Sat. 8:00 - 4:00



[www.campbellsupply.net](http://www.campbellsupply.net)

Except for clearance items, limited quantity or special purchases, Campbell Supply's resolution and determination is to have every item advertised in stock. Market conditions beyond our control on occasion will result in late deliveries of items advertised. Campbell Supply reserves the right to limit quantities and correct printing errors.